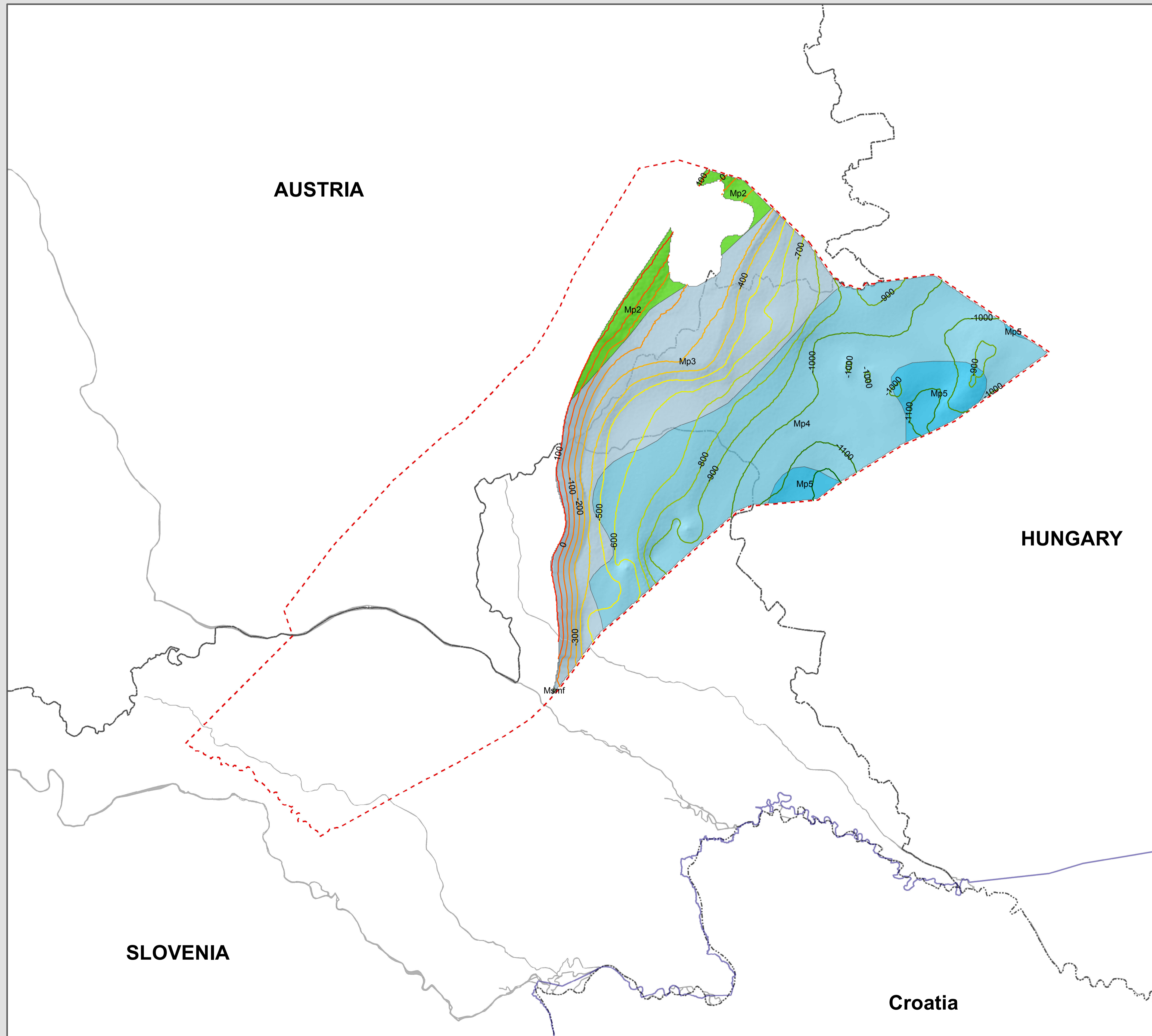


Pre-Upper Pannonian model horizon geology for the Pilot –Project Area

Editor: Gyula maros, Vera Maigut
Authors of the model horizons:

Hungary: Rita Barczikayné Szeiler, LászlóFodor, László Gyalog, Zsolt Kercksmár, Árpád Magyar, Vera Maigut, Gyula Maros, László Orosz, Klára Palotás, Ildikó Selmeczi, András Uhrin;
Austria: Bernhard Atzenhofer, Rudolf Berka, Magdalena Bottig, Anna Brüstle, Christine Hörfarther, Gerhard Schubert, Julia Weibold;
Slovenia: Bogomir Jelen, Helena Rifelj, Igor Rižnar.
2012

This project is implemented through the CENTRAL EUROPE Programme, co-financed by the ERDF



Legend

UPPER PANNONIAN

- Mp2 - Lacustrine silty clayey marl and littoral-deltaic-fluvial coarse deposits
- Mp3 - Lacustrine silty clayey marl (with sporadic occurrences of a turbiditic unit thinner than 100 m)
- Mp4 - Lacustrine silty clayey marl and sandy turbidites (thickness of the turbiditic unit: 100-500 m)
- Mp5 - Lacustrine silty clayey marl and sandy turbidites (thickness of the turbiditic unit: >500 m)
- Msmf - Shallow-marine – brackish-water, mollusc-bearing clay – clay marl; sand–sandstone, calcareous marl
- Supra area border
- Pilot area border
- State border

